

Downtown Redding Construction Updates



Shasta College Health Sciences Division

September 11th, 2020



The McConnell Foundation

Helping build better communities
through philanthropy



City of Redding Updates

DASH Shuttle & Updated Parking Map

DASH

Redding's **FREE** Downtown Area Shuttle Service

ABOUT

Introducing **DASH**, Redding's free **D**owntown **A**rea **S**huttle. Hop on a shuttle at one of the many downtown stops and enjoy a fast, free and reliable ride to connect with downtown hot spots and attractions.

ROUTES

With multiple stops located throughout Downtown Redding, you're always just steps away from grabbing a ride! Head to your nearest stop and grab a ride to your next downtown destination.



LEGEND

- East Loop
- West Loop
- Shuttle Stop
- Pick-up/Drop-off Corridor
- Public Parking
- County Parking
- Redevelopment
- 2 Hour Parking

DAYS & TIMES

Monday-Friday

- 6:45AM - 9:30AM
- 10:30AM - 1:30PM
- 3:30PM - 5:30PM

Shuttles loop every
8-10 minutes.

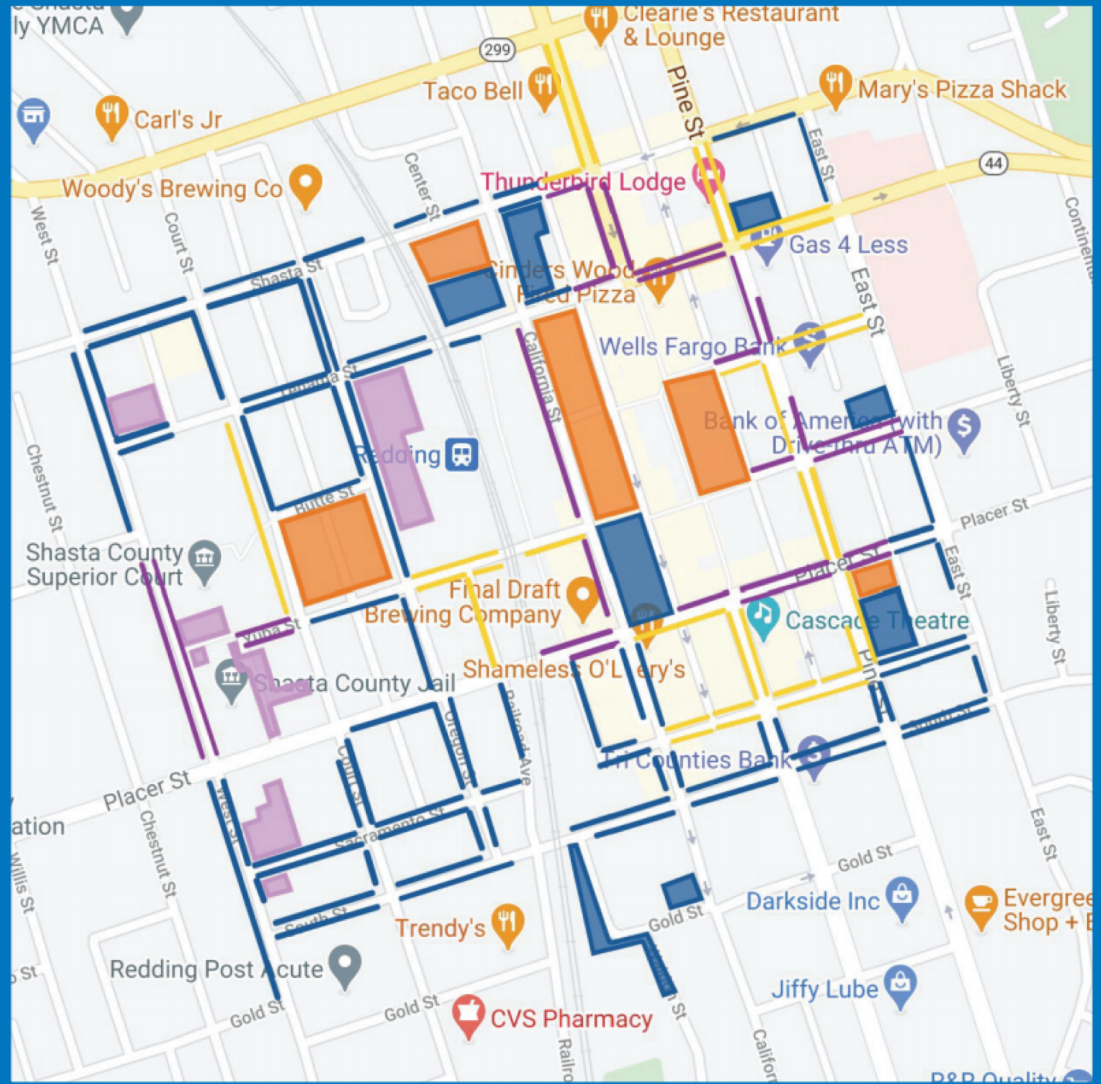


Downtown Parking

Updated
9.1.2020

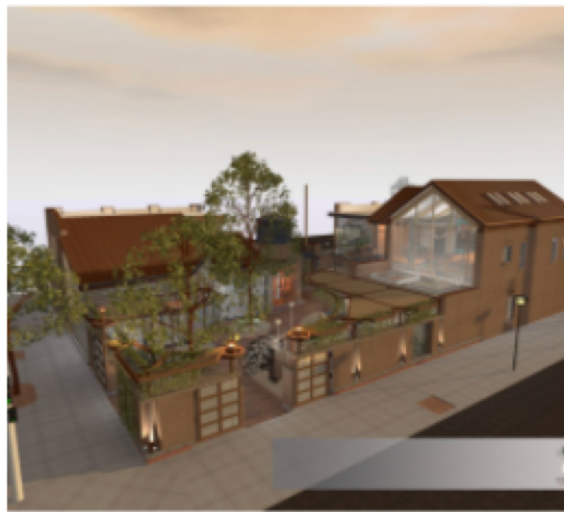
Let's Park!

- Public Parking
- 2 Hour Metered Parking
- County Parking
- 2 Hour Parking
- Redevelopment



McConnell Foundation updates

Bell Plaza Project



Community Vitality / May 22, 2020

PRESS RELEASE: BELL PLAZA PROJECT BREAKS GROUND

Bell Plaza Project Breaks Ground – For Immediate Release – May 22, 2020 In 2017, the Foundation made a 10-year funding commitment to Community Vitality, and the Bell Rooms became its first acquisition to help redevelop the downtown area. Early on, in its Community Vitality groundwork, the Foundation commissioned the Shasta Historical Society to create an [...]

[READ MORE](#)



Community Vitality / June 22, 2020

ADAPTIVE REUSE VS. HISTORIC PRESERVATION – WHAT IS THE DIFFERENCE?

On September 29, 2017, The McConnell Foundation submitted a proposal for an adaptive reuse project at the corner of California & Shasta streets in downtown Redding. Here is an excerpt from the 2017 application: How is an adaptive reuse project different from an historic preservation project? An adaptive reuse project intends to take an old [...]

[READ MORE](#)



Community Vitality / June 25, 2020

PAST MEETS FUTURE AT DOWNTOWN DEVELOPMENT (KRCR-TV)

The adaptive reuse project (dubbed "Bell Plaza") at the corner of California and Shasta Streets in downtown Redding is progressing. In case you missed this week's KRCR-TV story, click here for the story: Want to learn more? Here are related posts: Adaptive Reuse vs. Historic Preservation – What's the Difference?(June 22, 2020) Press Release: Bell [...]

[READ MORE](#)



Questions?

Feel free to contact us!

Rachel: rhatch@mcconnellfoundation.org

Steve: sbade@cityofredding.org